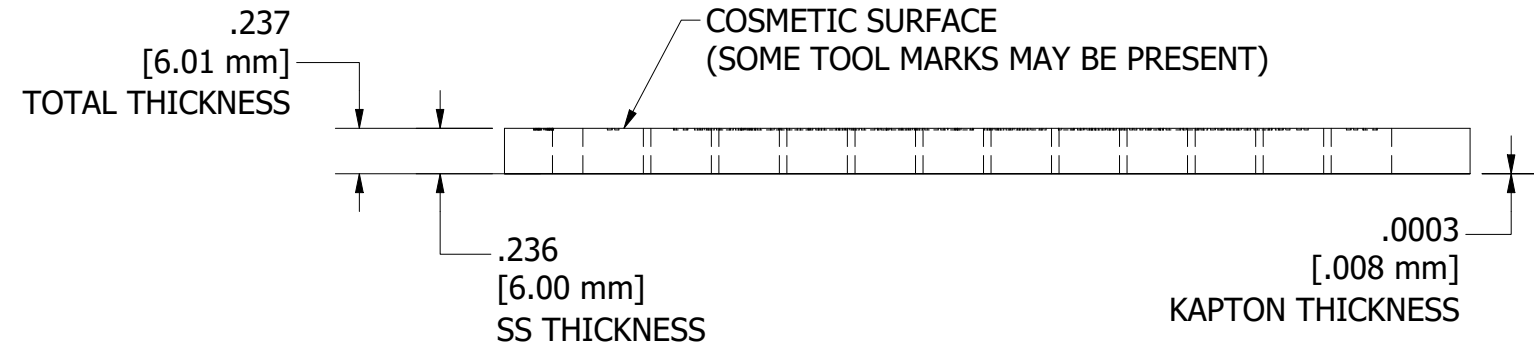
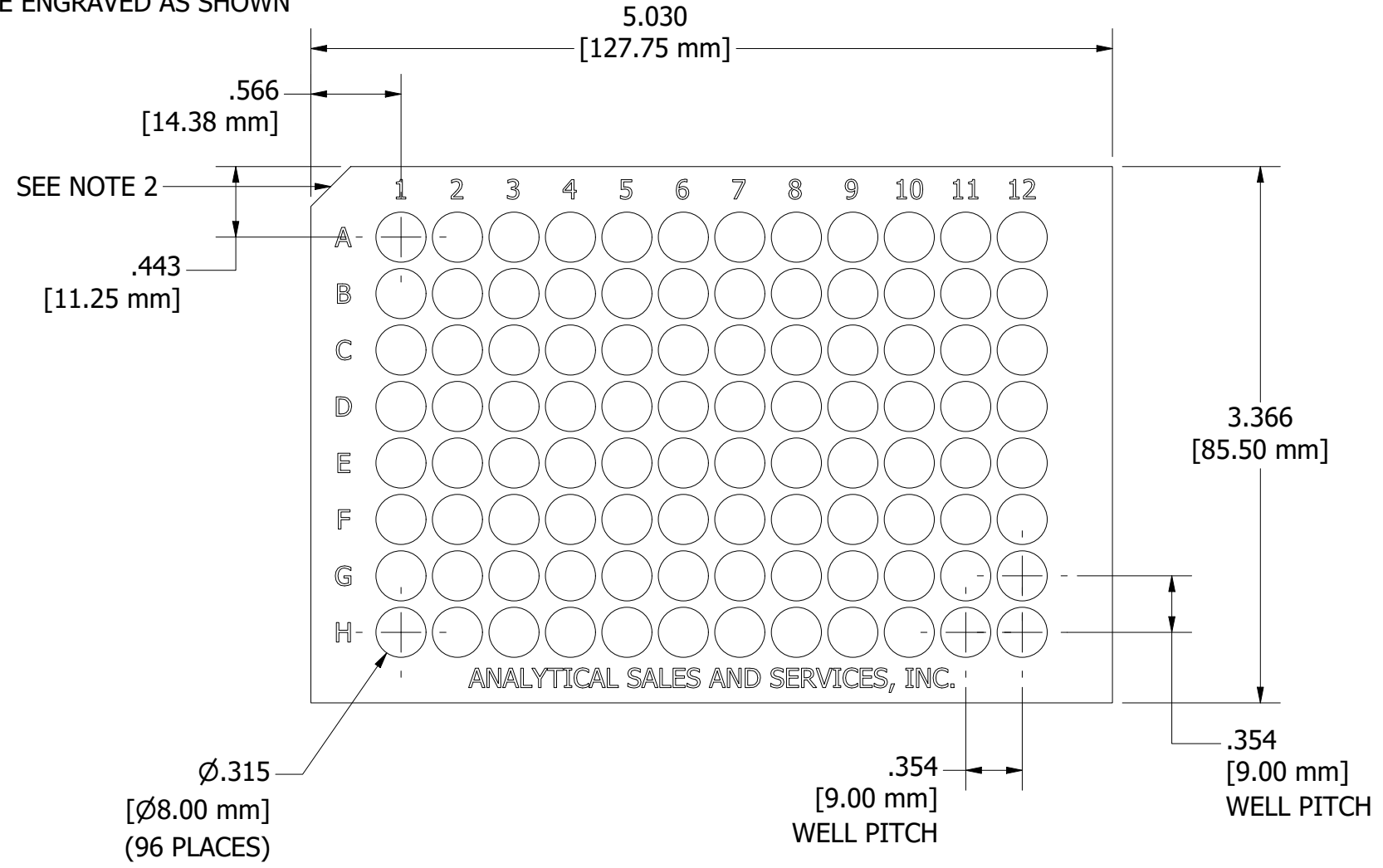
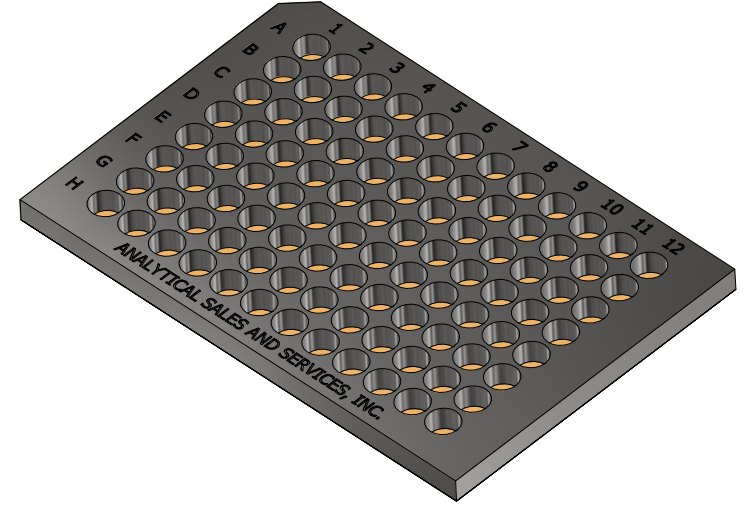


REVISION HISTORY			
REV	DESCRIPTION	DATE	APPROVED
1A	INITIAL RELEASE	6/20/2025	ENGINEERING

- NOTES:
1. MATERIAL: STAINLESS STEEL PLATE WITH KAPTON LINER
 2. UPPER LEFT CORNER NOTCHED FOR QUICK A1 IDENTIFICATION
 3. APPROX. VOLUME: 300 μ L/WELL
 4. PLATE WILL BE ENGRAVED AS SHOWN



DRAWN SAS email engineering@analytical-sales.com	6/20/2025	ANALYTICAL SALES AND SERVICES, INC © 2025	
TITLE			
96698_rev1a_PUBLIC		SIZE B	REV 1A
SCALE 1 : 1		SHEET 1 OF 1	

P