

# Precision MSQ Vials



**Minimum Interference,  
Maximum Performance!**

**Precision MSQ™**  
(Mass Spec Quality)

**Ultra-pure Certified Vials**

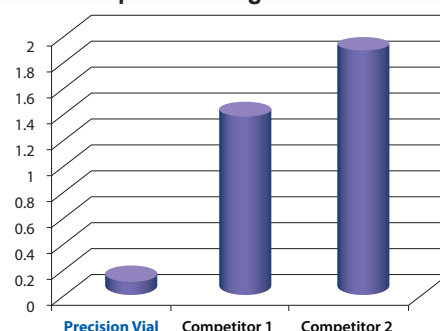
**CERTIFIED**  
AT NO ADDITIONAL CHARGE

**Why Precision MSQ is the best choice:**

Vials made with standard glass contain impurities which can leach into your sample. This can change the pH level of your sample and ultimately alter the accuracy of your results.

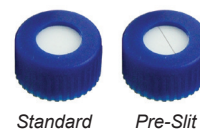
**Precision MSQ Vials** are made with the purest materials under the strictest mandates for cleanliness right here in the United States. Less impurities in the glass means less alteration of your sample and far greater accuracy of your results.

**pH Leaching Evaluation**

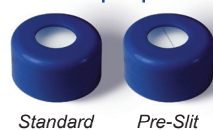


Units represent increase in pH measurement of water after standing in vial for 4 hours

**Screw Caps**

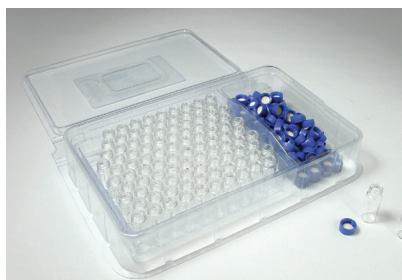








**Snap Caps**



**Precision MSQ Vial Kits**

- Kits contain (100) 9mm, 2mL unassembled vials/caps
- Cases include 10 boxes of 100 vials/caps
- Ultra pure MSQ PTFE/silicone liners
- Screw thread or snap closures available



	Screw Thread		Snap Cap	
	w/ MSQ Liner	w/ Pre-Slit MSQ Liner	w/ MSQ Liner	w/ Pre-Slit MSQ Liner
 Clear	99005-Case	99005SL-Case	---	---
 Clear w/ Marking Spot	99005M-Case	99005MSL-Case	99015M-Case	99015MSL-Case
 Amber	99005A-Case	99005ASL-Case	---	---
 Amber w/ Marking Spot	99005AM-Case	99005AMSL-Case	99015AM-Case	99015AMSL-Case
 Clear w/ Marking Spot and 300µL Fused Glass Insert	99003M Pack of 100	99003MSL Pack of 100	---	---
 Amber w/ Marking Spot and 300µL Fused Glass Insert	99003AM Pack of 100	99003AMSL Pack of 100	---	---

## Certification of Vials



analytical

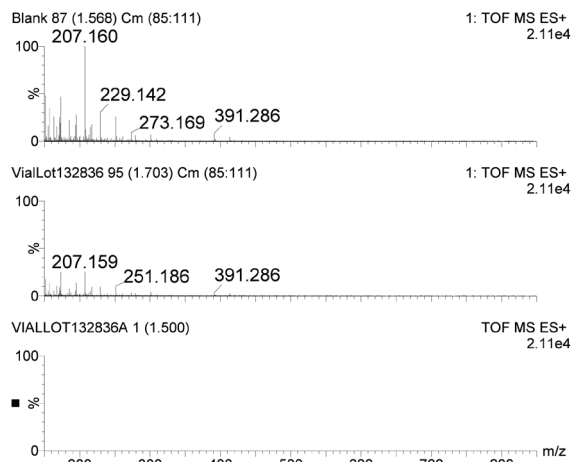
### Certificate of Analysis

**CERTIFIED**

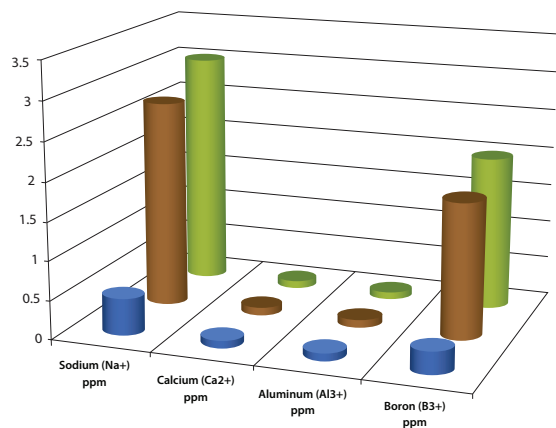
Attribute	Test	Result
Glass	Borosilicate, Type 1, Class A, 33 Expansion Glass	Pass
Dimensional Test	Height	Pass
	Diameter	Pass
	Bottom Thickness	Pass
	Neck/Thread	Pass
MS Scan Cleanliness Test	UPLC-MS/MS (TOF MS ES+)	Pass

Analytical Sales & Services, Inc.  
179 Route 206, Flanders, NJ 07836  
P: 973-616-0700 • F: 973-616-0133  
E: info@analytical-sales.com • W: www.analytical-sales.com

### MS Scan for Cleanliness Test



### Metals Extraction Evaluation

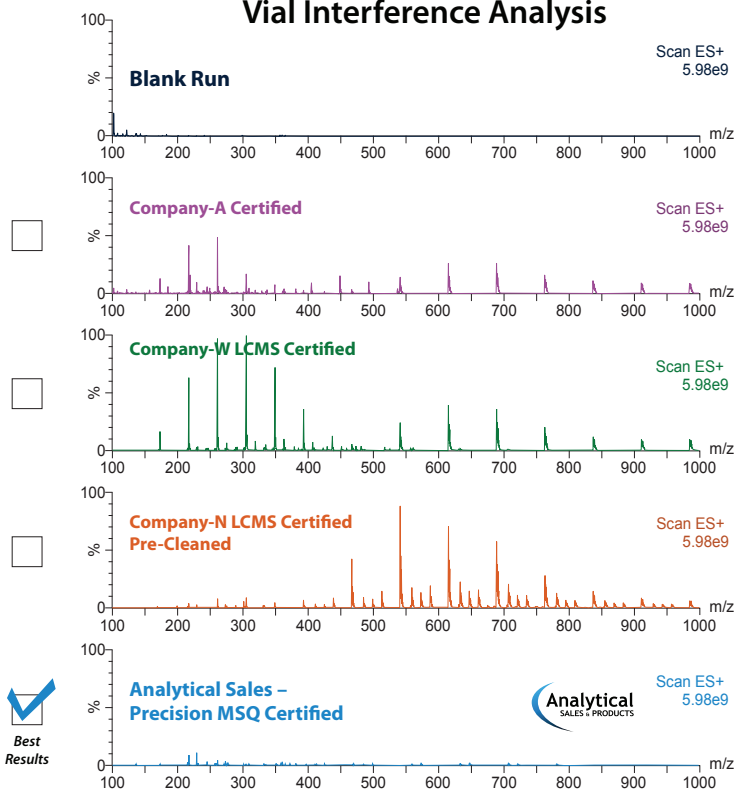


Levels are expressed in ppm. All vials were extracted with water for 4 hours prior to analysis. ICP analysis was used to measure metal ions.



Best Results

### Vial Interference Analysis



Septa was soaked in Methanol for 2 hours then analyzed. Blank is a direct injection into instrument. Analysis done on a single quad mass spec.