



Shown with heater (not included)



Shown with heaters (not included)

MonoSLEEVE™ SINGLE Column Heater Controller

- Self-calibrating
- Plug & Play smart heater technology
- Temperature range from 25°C to 85°C
- Controller comes with Power Supply, USB Cable, GUI Software and Manual



MonoSLEEVE is the next generation of the original HotSleeve Controller. With its advanced “Plug & Play” technology, MonoSleeve can accommodate single **HotSleeve™+ *** or **AgileSleeve+® *** column heaters of different sizes without having to recalibrate to each individual sleeve. This allows you to switch out different heaters on the fly.

** HotSleeve+ is the new “smart” version of the original HotSleeve. AgileSleeve+ is the new “smart” version of AgileSleeve.*

Cat. No.	Description
MonoSLEEVE	Single Column Heater Controller. Heater not included.

MultiSLEEVE™ MULTIPLE Column Heater Controller

- Self-calibrating
- Plug & Play smart heater technology
- Controls up to 4 column heaters simultaneously
- 4 independent channels
- Used in multiplexing applications
- Temperature range from 25°C to 85°C
- Controller comes with cables, manual and USB GUI software



The MultiSLEEVE controller is used for applications which require multiple heating zones or multiple LC system heating. Used in conjunction with **HotSleeve+** and/or **AgileSleeve+** heaters (see reverse), it maintains four independent channels simultaneously and accurately while reducing overall equipment costs.

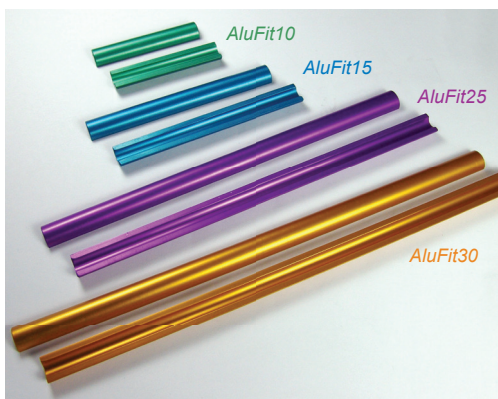
Cat. No.	Description
MultiSLEEVE	Multiple Column Heater Controller. Heaters not included.

Note: MonoSLEEVE and MultiSLEEVE will only accept HotSleeve+ and AgileSleeve+ heaters with “Plug & Play” technology (see back).

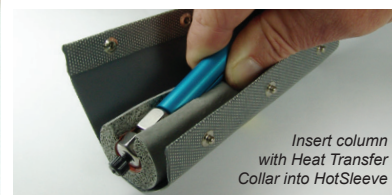
AluFit™ Heat Transfer Collars

- Use for proper heat transfer to analytical size columns when using **Hot Sleeve+™**
- Provides reduced initial equilibration time

Cat. No.	Description
AluFit10	Heat Transfer Collar for 10cm Columns
AluFit15	Heat Transfer Collar for 15cm Columns
AluFit25	Heat Transfer Collar for 25cm Columns
AluFit30	Heat Transfer Collar for 30cm Columns
AluFitKit	Heat Transfer Collar Kit. Includes: 1 Each of Collars for 10cm, 15cm, 25cm and 30cm Columns



Place column between the two halves of the Heat Transfer Collar



Insert column with Heat Transfer Collar into HotSleeve

HotSleeve™+ and AgileSleeve+® Column Heaters

All heaters made by Analytical Sales and Products are calibrated to NIST traceable standards.

HotSleeve™

Family of Column Heaters

HotSleeve+ and AgileSleeve+ are self-calibrating “smart” heaters that utilize “Plug & Play” technology. This technology reduces all of the error generated when switching heaters from one system to another.

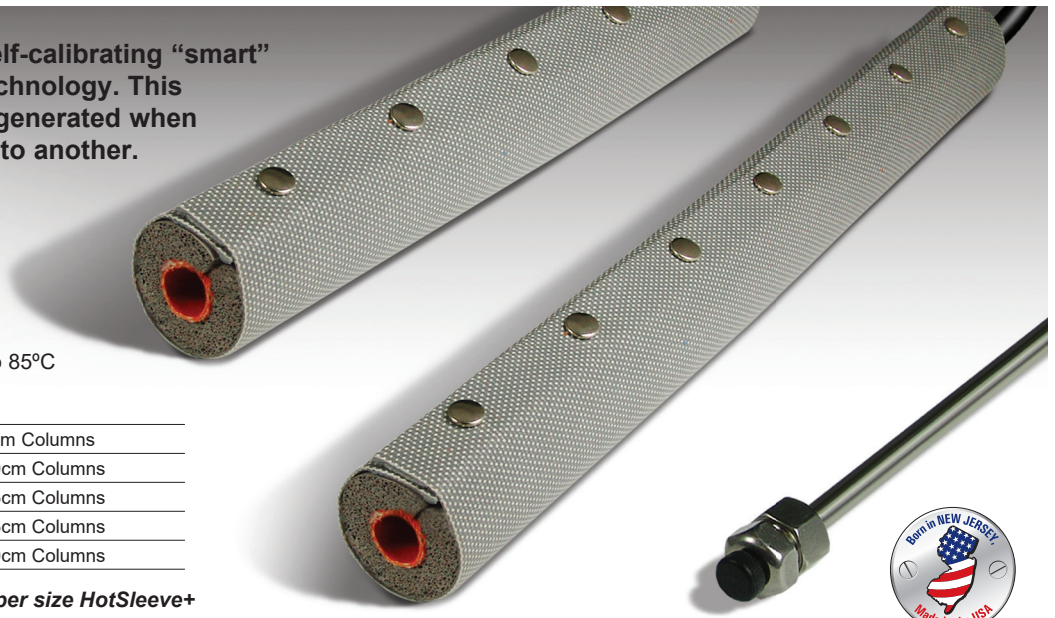
HotSleeve™+

Analytical Size Column Heater

- Self-calibrating
- Temperature range from 5°C above ambient to 85°C

Cat. No.	Description
HSI-5L	HotSleeve+ Self-calibrating Heater for 5cm Columns
HSI-10L	HotSleeve+ Self-calibrating Heater for 10cm Columns
HSI-15L	HotSleeve+ Self-calibrating Heater for 15cm Columns
HSI-25L	HotSleeve+ Self-calibrating Heater for 25cm Columns
HSI-30L	HotSleeve+ Self-calibrating Heater for 30cm Columns

Call to inquire about Prep, Semi-prep and Super size HotSleeve+



AgileSleeve™+

Flexible Capillary Heater

- Accurate from 30°C to 100°C
- Heat lines up to 30 cm long, with outside diameters of 1/32" or 1/16"
- Great for small diameter analytical columns, nanospray, injector or pre-column mobile phase lines

Cat. No.	Description
ASI1032H	AgileSleeve+, 10cm x 1/32" ID Self-calibrating Heater
ASI1016H	AgileSleeve+, 10cm x 1/16" ID Self-calibrating Heater
ASI1532H	AgileSleeve+, 15cm x 1/32" ID Self-calibrating Heater
ASI1516H	AgileSleeve+, 15cm x 1/16" ID Self-calibrating Heater
ASI2532H	AgileSleeve+, 25cm x 1/32" ID Self-calibrating Heater
ASI2516H	AgileSleeve+, 25cm x 1/16" ID Self-calibrating Heater
ASI3032H	AgileSleeve+, 30cm x 1/32" ID Self-calibrating Heater
ASI3016H	AgileSleeve+, 30cm x 1/16" ID Self-calibrating Heater



AgileSleeve+ is also available in longer lengths - call for details

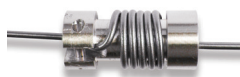


All Analytical Sales and Services heater products carry the value recognized CE mark. Each heater meets the demanding electromagnetic emission standards of the new European Union Directives, United States standards, and Canadian standards.



Mobile Phase Pre-Heater

Cat. No.	Description
ADV9000	15 µL Mobile Phase Pre-Heater, 0.010" ID
ADV9005	Semi-Prep Mobile Phase Pre-Heater, 0.02" ID
ADV9038	3.8 µL Mobile Phase Pre-Heater, 0.005" ID



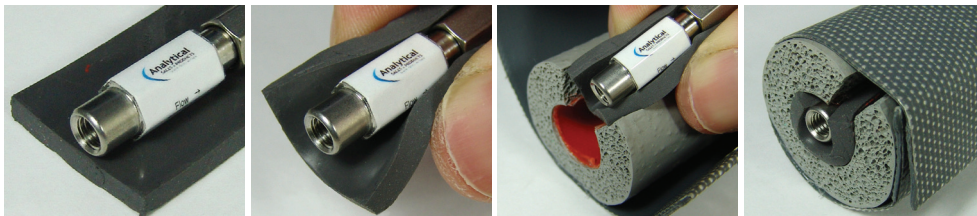
Mobile Phase Pre-Heater with Ultra High Pressure Fingertight SS Fitting

Cat. No.	Description
ADV9000UHP	15 µL Mobile Phase Pre-Heater, 0.010" ID
ADV9500UHP	3.8 µL* Mobile Phase Pre-Heater, 0.005" ID

* Super low volume pre-column mobile phase pre-heater for Hot Sleeve Column Heater. Provides superior performance for short, 3.5 micron and smaller particle diameter HPLC columns



Capillary Column CapWrap™ Use for proper heat transfer of smaller OD capillary columns when using HotSleeve+



Cat. No.	Description
CapWrap5	2.5cm x 5cm Capillary Column Wrap
CapWrap10	2.5cm x 10cm Capillary Column Wrap
CapWrap15	2.5cm x 15cm Capillary Column Wrap
CapWrap25	2.5cm x 25cm Capillary Column Wrap
CapWrap30	2.5cm x 30cm Capillary Column Wrap