



MonoSLEEVE™ & MultiSLEEVE™



Shown with heater
(not included)



Shown with heaters
(not included)

MonoSLEEVE™ SINGLE Column Heater Controller

- Self-calibrating
- Plug & Play smart heater technology
- Temperature range from 25°C to 85°C
- Controller comes with Power Supply, USB Cable, GUI Software and Manual



MonoSLEEVE is the next generation of the original HotSleeve Controller. With its advanced "Plug & Play" technology, MonoSleeve can accommodate single **HotSleeve™+ *** or **AgileSleeve+® *** column heaters of different sizes without having to recalibrate to each individual sleeve. This allows you to switch out different heaters on the fly.

** HotSleeve+ is the new "smart" version of the original HotSleeve.
AgileSleeve+ is the new "smart" version of AgileSleeve.*

| Cat. No. | Description |
|------------|--|
| MonoSLEEVE | Single Column Heater Controller. <i>Heater not included.</i> |

MultiSLEEVE™ MULTIPLE Column Heater Controller

- Self-calibrating
- Plug & Play smart heater technology
- Controls up to 4 column heaters simultaneously
- 4 independent channels
- Used in multiplexing applications
- Temperature range from 25°C to 85°C
- Controller comes with cables, manual and USB GUI software



The MultiSLEEVE controller is used for applications which require multiple heating zones or multiple LC system heating. Used in conjunction with **HotSleeve+** and/or **AgileSleeve+** heaters (see reverse), it maintains four independent channels simultaneously and accurately while reducing overall equipment costs.

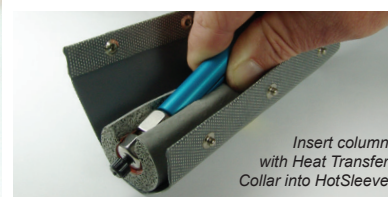
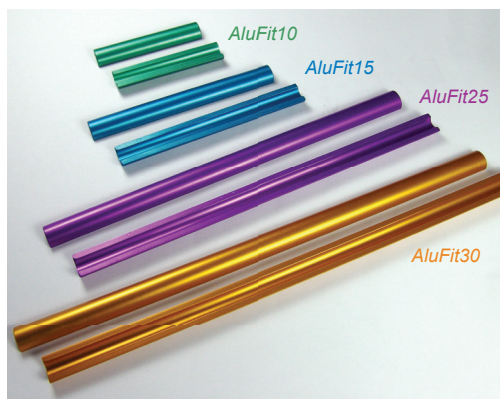
| Cat. No. | Description |
|-------------|---|
| MultiSLEEVE | Multiple Column Heater Controller. <i>Heaters not included.</i> |

Note: MonoSLEEVE and MultiSLEEVE will only accept HotSleeve+ and AgileSleeve+ heaters with "Plug & Play" technology (see back).

AluFit™ Heat Transfer Collars

- Use for proper heat transfer to analytical size columns when using **Hot Sleeve+™**
- Provides reduced initial equilibration time

| Cat. No. | Description |
|-----------|---|
| AluFit10 | Heat Transfer Collar for 10cm Columns |
| AluFit15 | Heat Transfer Collar for 15cm Columns |
| AluFit25 | Heat Transfer Collar for 25cm Columns |
| AluFit30 | Heat Transfer Collar for 30cm Columns |
| AluFitKit | Heat Transfer Collar Kit. Includes: 1 Each of Collars for 10cm, 15cm, 25cm and 30cm Columns |



HotSleeve™+ and AgileSleeve+® Column Heaters

All heaters made by Analytical Sales and Products are calibrated to NIST traceable standards.

HotSleeve™
Family of Column Heaters

HotSleeve+ and AgileSleeve+ are self-calibrating “smart” heaters that utilize “Plug & Play” technology. This technology reduces all of the error generated when switching heaters from one system to another.

HotSleeve™+

Analytical Size Column Heater

- Self-calibrating
- Temperature range from 5°C above ambient to 85°C

| Cat. No. | Description |
|----------|---|
| HSI-5L | HotSleeve+ Self-calibrating Heater for 5cm Columns |
| HSI-10L | HotSleeve+ Self-calibrating Heater for 10cm Columns |
| HSI-15L | HotSleeve+ Self-calibrating Heater for 15cm Columns |
| HSI-25L | HotSleeve+ Self-calibrating Heater for 25cm Columns |
| HSI-30L | HotSleeve+ Self-calibrating Heater for 30cm Columns |

Call to inquire about Prep, Semi-prep and Super size HotSleeve+

AgileSleeve™+

Flexible Capillary Heater

- Accurate from 30°C to 100°C
- Heat lines up to 30 cm long, with outside diameters of 1/32" or 1/16"
- Great for small diameter analytical columns, nanospray, injector or pre-column mobile phase lines

| Cat. No. | Description |
|----------|---|
| ASI1032H | AgileSleeve+, 10cm x 1/32" ID Self-calibrating Heater |
| ASI1016H | AgileSleeve+, 10cm x 1/16" ID Self-calibrating Heater |
| ASI1532H | AgileSleeve+, 15cm x 1/32" ID Self-calibrating Heater |
| ASI1516H | AgileSleeve+, 15cm x 1/16" ID Self-calibrating Heater |
| ASI2532H | AgileSleeve+, 25cm x 1/32" ID Self-calibrating Heater |
| ASI2516H | AgileSleeve+, 25cm x 1/16" ID Self-calibrating Heater |
| ASI3032H | AgileSleeve+, 30cm x 1/32" ID Self-calibrating Heater |
| ASI3016H | AgileSleeve+, 30cm x 1/16" ID Self-calibrating Heater |

AgileSleeve+ is also available in longer lengths - call for details



All Analytical Sales and Services heater products carry the value recognized CE mark. Each heater meets the demanding electromagnetic emission standards of the new European Union Directives, United States standards, and Canadian standards.



Mobile Phase Pre-Heater

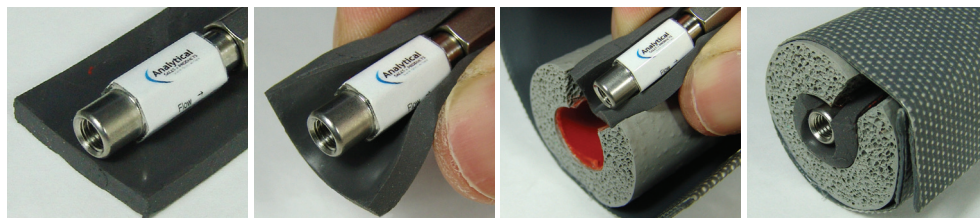
| Cat. No. | Description |
|----------|---|
| ADV9000 | 15 µL Mobile Phase Pre-Heater, 0.010" ID |
| ADV9005 | Semi-Prep Mobile Phase Pre-Heater, 0.02" ID |
| ADV9038 | 3.8 µL Mobile Phase Pre-Heater, 0.005" ID |

Mobile Phase Pre-Heater with Ultra High Pressure Fingertight SS Fitting

| Cat. No. | Description |
|------------|--|
| ADV9000UHP | 15 µL Mobile Phase Pre-Heater, 0.010" ID |
| ADV9500UHP | 3.8 µL* Mobile Phase Pre-Heater, 0.005" ID |

* Super low volume pre-column mobile phase pre-heater for Hot Sleeve Column Heater. Provides superior performance for short, 3.5 micron and smaller particle diameter HPLC columns

Capillary Column CapWrap™ Use for proper heat transfer of smaller OD capillary columns when using HotSleeve+



| Cat. No. | Description |
|-----------|------------------------------------|
| CapWrap5 | 2.5cm x 5cm Capillary Column Wrap |
| CapWrap10 | 2.5cm x 10cm Capillary Column Wrap |
| CapWrap15 | 2.5cm x 15cm Capillary Column Wrap |
| CapWrap25 | 2.5cm x 25cm Capillary Column Wrap |
| CapWrap30 | 2.5cm x 30cm Capillary Column Wrap |