

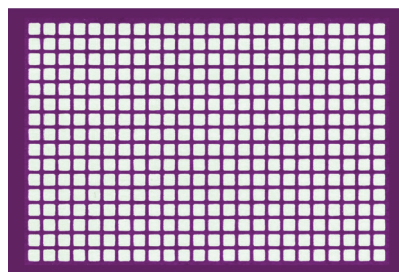
A Selection of Products for Your Workflow - from Sample to Detector



38200G



96384SL



38402

384-Well Collection Plates

Our Advantage™ 384-Well collection plates and accessories are designed for high throughput analysis and are available in an assortment of volume sizes and colors. Our polypropylene plates are chemical and solvent resistant and are fully compatible with automated and robotic systems.

384-Well Collection Plates – Square Well

Cat. No.	Description	Qty
38200	200µL, Polypropylene, Square Well, Clear	24
38200B	200µL, Polypropylene, Square Well, Blue	24
38200G	200µL, Polypropylene, Square Well, Green	24
38200R	200µL, Polypropylene, Square Well, Red	24
38200Y	200µL, Polypropylene, Square Well, Yellow	24

384-Well Cap Mats - Square Well

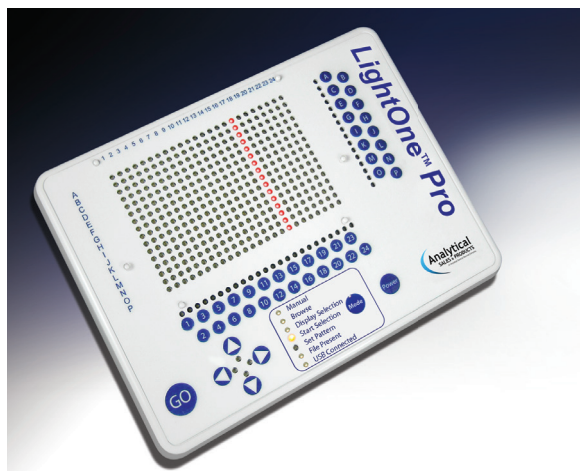
Cat. No.	Description	Qty
96384	Molded 384-Well Soft Silicone Square Well Cap Mat	5
96384SL	Molded 384-Well Pre-Slit Soft Silicone Square Well Cap Mat	5

384-Well Green Pattern Adhesive PTFE (Teflon®) Sealing Film

Cat. No.	Description	Qty
38402	384 Square Well Green Pattern Adhesive PTFE Sealing Film	100

1536-Well Collection Plates – Square Well

Cat. No.	Description	Qty
15020	20µL, Polypropylene, Square Well, Clear	60



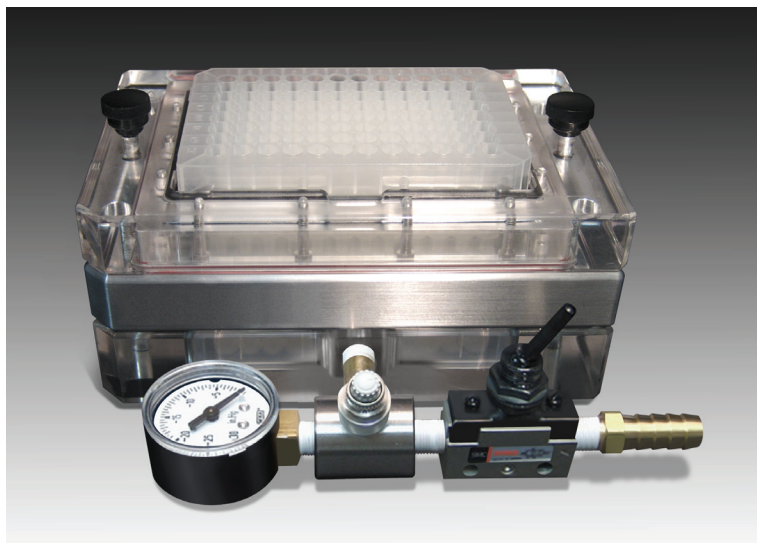
LightOne Pro Illuminator

Light up your 384 or 96-well collection plate samples

- 384-Well or 96-Well
- Dedicated for high throughput assay development
- Customizable: highlight a single well or an entire row or column
- Quickly identify and select the area you want to pipette
- Foot pedal control for easy, hands-free navigation
- Reduces manual errors, increases productivity

Cat. No.	Description
LOI-384	LightOne Pro

For pricing, see analytical-sales.com



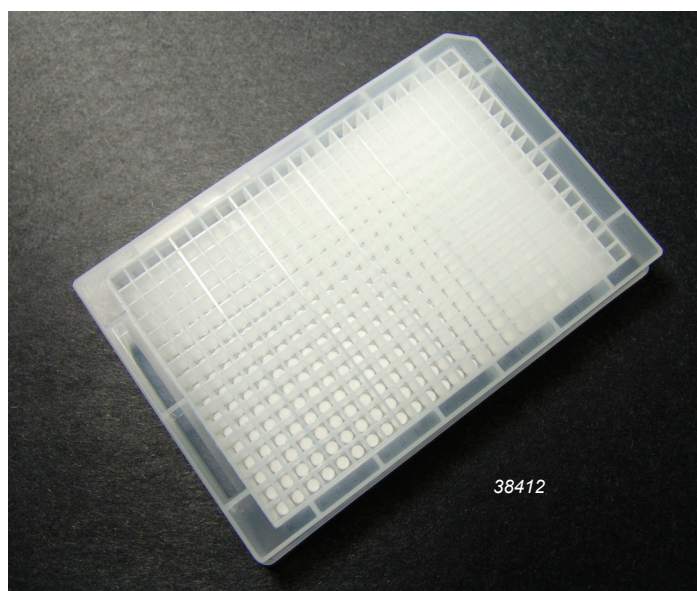
Vacuum Manifold Filtration System for SPE Sample Preparation

- Sturdy, clear acrylic construction
- Adjustable vacuum control
- Easy access to filtrate
- Compatible with all standard filter bottom microplates
- Collect into any storage plate
- Compatible with robotic handling

Cat. No.	Description
96844	Vacuum Manifold Filtration System for SPE Sample Filtration

General Filtration 384-well Filter Plates

Cat. No.	Description	Qty
38412	384 Well Filter Plates, 140µL, Glass Fiber, 1.2µm	10
38407	384 Well Filter Plates, 140µL, Glass Fiber, 0.7µm	10



Canary-Safe™ Solvent Safety Products



Mobile Phase Bottle Safety Caps

Cat. No.	Description
CC1001	Canary-Safe™ Cap 1, GL45, 1 Standard Port for 1/8" OD Tubing
CC1002	Canary-Safe™ Cap 2, GL45, 2 Standard Ports for 1/8" OD Tubing

X-Type Syringes for CTC PAL® LC Autosamplers

- **Deactivated Needle and Barrel**
 - Eliminates contact between samples and metal components
 - Prevents sample adsorption on inner surface of the barrel
 - Extremely smooth surface for low friction and increased plunger lifetime
- **Inert PTFE-Polymer Plunger Tip**
 - High mechanical stability for increased syringe lifetime
 - Highly inert plunger tip material compatible with organics and high and low pH solutions



Cat. No.	Volume	Model	Gauge	CTC Part No.
42044754	25 µL	1702	22s	SYRX G25-22S-3
42044004	100 µL	1710	22	SYRX G100-22-3
42044524	100 µL	1710	22s	SYRX G100-22S-3

This is a quick guide of our top selling products.

FlexChrom®
Flexible Stainless Steel Tubing

Assemblies

UHPLC, Pre-Finished, One-Piece Flexible
SS Tubing with Finger Tight SS Fittings



- 1/16" OD
- True ZDV
- Greater flexibility
- Pressure tested to **27,000 psi**
- One-piece design – no brazed-on sleeves

FlexChrom® can be ordered as single tubing or as an assembly using UHPLC stainless steel finger tight fittings (as shown).

Single UHPLC Assembly

Cat. No.	Dimensions
990115-Flex	20cm x 0.005"ID
990128-Flex	30cm x 0.005"ID

Double UHPLC Assembly

Cat. No.	Dimensions
990215-Flex	20cm x 0.005"ID
990228-Flex	30cm x 0.005"ID



PEEK™ Ultra High Pressure Fingertight Fittings

Cat. No.	Description	Pressure	Qty
66518-3	10-32 PEEK One-Piece Fitting for 1/16" OD Tubing	12,000 psi	10

All PEEK Tubing ID & Lengths also Available



Shown with heater
(not included)

MonoSLEEVE™

SINGLE Column Heater Controller

- Self-calibrating
- Plug & Play smart heater technology
- Temperature range from 25°C to 85°C
- Controller comes with Power Supply, USB Cable, GUI Software and Manual.

MonoSLEEVE is the next generation of the original HotSLEEVE controller. With it's advanced "Plug & Play" technology, MonoSleeve can accommodate single HotSleeve+™ or AgileSleeve+®* column heaters of different sizes without having to recalibrate to each individual sleeve. This allows you to switch out different heaters on the fly.

* HotSleeve+ is the new "smart" version of the original HotSleeve.
AgileSleeve+ is the new "smart" version of AgileSleeve.

Cat. No.	Description
MonoSLEEVE	Single Column Heater Controller. Heater not included.



Shown with heaters
(not included)

MultiSLEEVE™

MULTIPLE Column Heater Controller

- Self-calibrating
- Plug & Play smart heater technology
- Controls up to 4 column heaters simultaneously
- 4 independent channels
- Used in multiplexing applications
- Temperature range from 25°C to 85°C
- Controller comes with cables, manual and USB GUI software.

The MultiSLEEVE controller is used for applications which require multiple heating zones or multiple LC system heating. Used in conjunction with the new HotSleeve+™ and/or AgileSleeve+® heaters, it maintains four independent channels simultaneously and accurately while reducing overall equipment costs.

Cat. No.	Description
MultiSLEEVE	Multiple Column Heater Controller. Heaters not included.

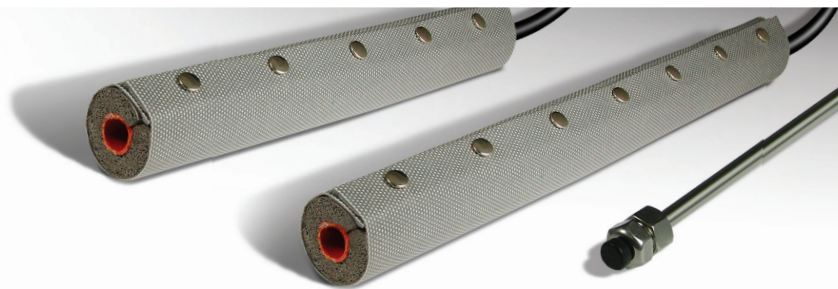
HotSleeve+™

Heating element only

Analytical Size Column Heater

- Self-calibrating
- Temperature range from 5°C above ambient to 85°C

Cat. No.	Description
HSI-5L	HotSleeve+ Self-calibrating Heater for 5cm Columns
HSI-10L	HotSleeve+ Self-calibrating Heater for 10cm Columns



Other items, options and/or sizes are available - please call for details.

Echelon C18: Sub 2 μ m & 3 μ m Columns



- Proprietary highest quality C18 & packing method
 - Better retention and resolution of compounds more polar than traditional C18 can manage
 - **Extreme Durability:**
 - pH 2-11
 - Handles 100% aqueous
 - **Proven Reliability:**
 - Adopted by high-throughput screening groups for years
- Featured in 2013 ASMS poster, visit:*
<http://www.analytical-sales.com/Echelon-Columns.html>

<2 μ m Echelon Columns

C18 100Å 1.7 μ m

Cat. No.	Description
ADV8106	Echelon C18, 100Å, 1.7 μ m, 2cm x 2.1mm
ADV8107	Echelon C18, 100Å, 1.7 μ m, 3cm x 2.1mm
ADV8108	Echelon C18, 100Å, 1.7 μ m, 5cm x 2.1mm

3 μ m Echelon Columns

C18 100Å 3 μ m

ADV8302	Echelon C18, 100Å, 3 μ m, 20mm x 2.1mm
ADV8303	Echelon C18, 100Å, 3 μ m, 30mm x 2.1mm
ADV8304	Echelon C18, 100Å, 3 μ m, 50mm x 2.1mm

Advantage™ Direct Connect Inline Filter Guard

- Protect your valuable columns from dirt and grease
- Direct connect to inlets for 1/16" tubing and 10-32 threads
- Changes in seconds without the need for tools
- Two frit sizes available: 0.5 μ m and 2.0 μ m
- Inexpensive and Disposable



Cat. No.	Description
1605	Advantage™ 0.5 μ m Direct Connect Inline Filter Guard
1620	Advantage™ 2.0 μ m Direct Connect Inline Filter Guard

Direct Connect SS UHPLC Pre-Column Filter

- Rated to 15,000psi • 0.5 μ m Titanium Frit • 1 μ l Dead Volume



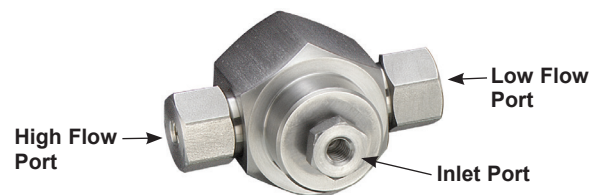
Cat. no.	Description	Qty
49005	Direct Connect UHPLC Pre-Column Filter	10

Model 63 Post-Column Binary Fixed Flow Splitters

Analytical Range - 0.1-5mL/min Incoming Flow

- Fixed metering for precise control
- Fluid resistor technology
- Split ratios from 1:1 to 20,000:1
- Low dead volume
- Rugged stainless steel design

Model 63 Binary Fixed Splitter, with its interchangeable fluid resistors, eliminates the need to cut capillary tubing to change the split ratio. Split ratios can be changed by replacing the resistor set.



Cat. No.	Description
63-423	Binary Fixed Splitter, Ratio 1:1
63-422	Binary Fixed Splitter, Ratio 3:1
63-424	Binary Fixed Splitter, Ratio 4:1



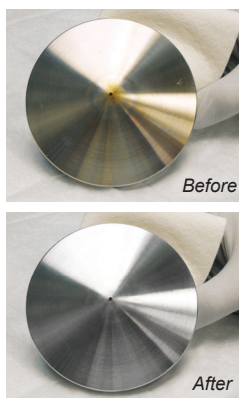
Mass Spec Polishing Kit

Clean the curtain plate and orifice of your Mass Spec source.

Kit Contains:

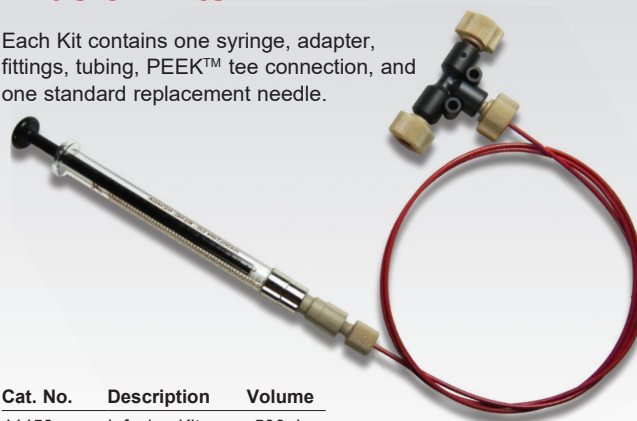
3 cleaning sheets, 3 cleaning pads, 1 Flannel Polishing Cloth

Cat. No.	Description
67001	Mass Spec Polishing Kit



Infusion Kits

Each Kit contains one syringe, adapter, fittings, tubing, PEEK™ tee connection, and one standard replacement needle.



Cat. No.	Description	Volume
44450	Infusion Kit	500 μ L
44410	Infusion Kit	1.0mL