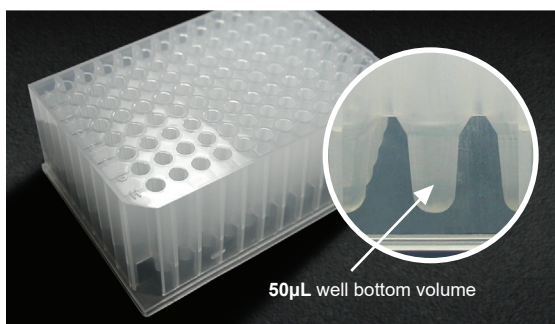




A Selection of Products for Your Workflow - from Sample to Detector



1mL TrueTaper®

1mL, 96-Well Polypropylene Collection Plate

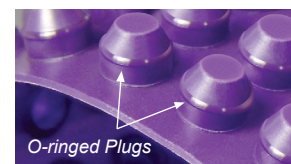
- Round well with unique **tapered bottom** for maximum sample recovery
- 1.0mL total volume capacity
- **50µL tapered bottom volume**

Cat. No.	Description	Volume	Qty
968810	1mL TrueTaper 96-Well Collection Plate	50µL bottom/1.0mL total	25
968810GC	1mL TrueTaper w/ SiliGuard	50µL bottom/ 1.0mL total	25

Purple Silicone Cap Mats

for **1mL TrueTaper** Collection Plates

- **Unique O-ringed Plugs**
- Holds Seal with Vigorous Vortexing
- No Crosstalk • Autosampler Compatible

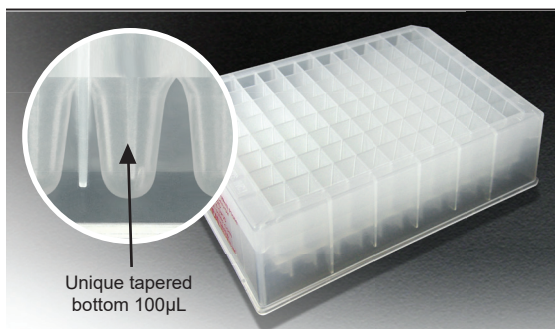
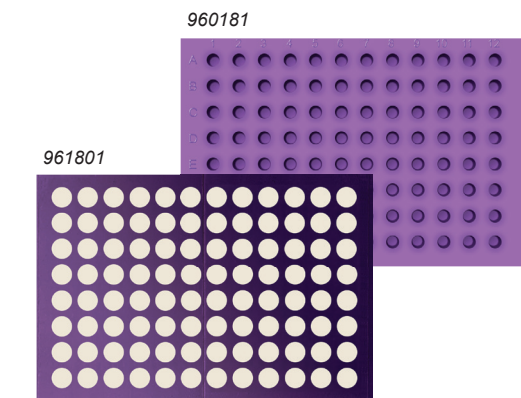


Cat. No.	Description	Qty
960181	Purple Silicone/PTFE Cap Mat for 1mL TrueTaper Plate	5
960185	Purple Pre-Slit Silicone/PTFE Cap Mat for 1mL TrueTaper	5

Pattern Adhesive PTFE (Teflon®) Sealing Film (patented)

Cat. No.	Description	Qty
961801	Advantage™ Teflon (PTFE) Adhesive Film, Round 96-Well Pattern, Ultra-thin	100

* Pre-Slit films also available



2mL TrueTaper™

2mL, 96-Well Collection Plate - Square Well

- Square well with unique **tapered bottom** for maximum sample recovery
- 2.0mL total volume capacity
- **100µL tapered bottom volume**

Cat. No.	Description	Material	Volume	Qty
968820	TrueTaper 96-Well Collection Plate	PP	100µL bottom/2.0mL total	25
968820GC	TrueTaper w/ SiliGuard	PP	100µL bottom/ 2.0mL total	25

Resealable Silicone/PTFE Coated Cap Mats

- Compatible with all current autosampler needles • No coring or cross talk
- Fits all standard 96-position blocks • Reseals after multiple injections

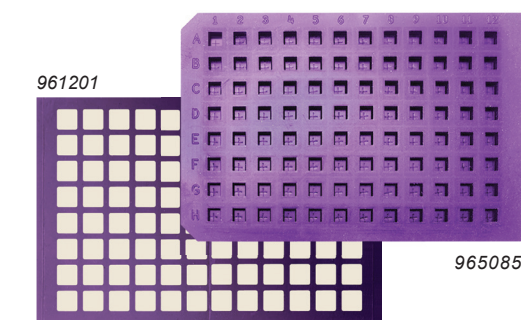
Cat. No.	Description	Color	Qty
965085	Pre-Slit , Ultra Thin Square Well, Soft Silicone/PTFE	Purple	5

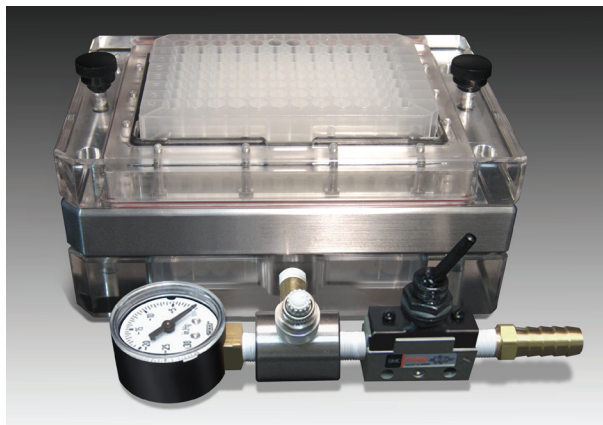
* Non pre-slit mats also available

Pattern Adhesive PTFE (Teflon®) Sealing Film (patented)

Cat. No.	Description	Qty
961201	Advantage™ Teflon (PTFE) Adhesive Film, Square 96-Well Pattern, Ultra-thin	100

* Pre-Slit films also available





Vacuum Manifold Filtration System for SPE Sample Preparation

- Adjustable vacuum control
- Compatible with all standard filter bottom microplates
- Collect into any storage plate
- Compatible with robotic handling

Cat. No.	Description
96844	Vacuum Manifold Filtration System for SPE Sample Filtration

General Filtration 96-well Filter Plates

- After SPE
- Dilute and Shoot
- Use prior to LCMS and Microarraying

Low Protein Binding - Sample in Solvent

Cat. No.	Description	Qty
96245-10	2mL Hydrophilic PP, 0.45µm	10

Drug Discovery 96-Well Filter Plates

- Low Protein Binding
- General Filtration

Cat. No.	Description	Qty
96254-10	2mL Hydrophobic PP, 0.45µm	10

Advantage™ 96-Well, 1mL Protein Crash Plates for Protein Precipitation

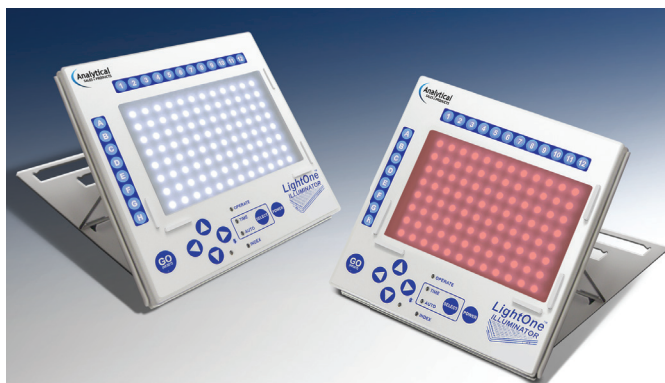
Only \$50/Plate!



- Proprietary frits (made by Analytical Sales) produce optimized Protein Precipitation

Cat. No.	Description	Qty
60513-5	1mL Protein Precipitate 96 Well Plate w/ Grated Screen	5

* Additional discount on bulk orders



LightOne Illuminator & LightOne Red (For Real Time PCR)

- Reduces manual errors
- Customizable: highlight a single well or an entire row or column
- Perfect for cluster tubes and glass inserts
- Selective illumination to accommodate light sensitive reagents
- Foot pedal control for easy, hands-free navigation

Cat. No.	Description
LOI-96FT	LightOne Illuminator
LOR-96FT	LightOne Red



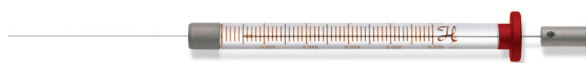
Canary-Safe™

Mobile Phase Bottle Safety Caps

Cat. No.	Description
CC1001	Canary-Safe™ Cap 1, GL45, 1 Standard Port for 1/8" OD Tubing
CC1002	Canary-Safe™ Cap 2, GL45, 2 Standard Ports for 1/8" OD Tubing

X-Type Syringes for CTC PAL® LC Autosamplers

- Deactivated Needle and Barrel
 - Eliminates contact between samples and metal components
 - Prevents sample adsorption on inner surface of the barrel
 - Extremely smooth surface for low friction and increased plunger lifetime
- Inert PTFE-Polymer Plunger Tip
 - High mechanical stability for increased syringe lifetime
 - Highly inert plunger tip material compatible with organics and high and low pH solutions



Cat. No.	Volume	Model	Gauge	CTC Part No.
42044754	25 µL	1702	22s	SYRX G25-22S-3
42044004	100 µL	1710	22	SYRX G100-22-3
42044524	100 µL	1710	22s	SYRX G100-22S-3

This is a quick guide of our top selling products.

Assemblies

UHPLC, Pre-Finished, One-Piece Flexible SS Tubing with Finger Tight SS Fittings



- 1/16" OD
- True ZDV
- Greater flexibility
- Pressure tested to 27,000 psi
- One-piece design – no brazed-on sleeves

Single UHPLC Assembly

Cat. No.	Dimensions
990115-Flex	20cm x 0.005"ID
990128-Flex	30cm x 0.005"ID

Double UHPLC Assembly

Cat. No.	Dimensions
990215-Flex	20cm x 0.005"ID
990228-Flex	30cm x 0.005"ID



PEEK™ Ultra High Pressure Fingertight Fittings

Cat. No.	Description	Pressure	Qty
66518-3	10-32 PEEK One-Piece Fitting for 1/16" OD Tubing	12,000 psi	10

All PEEK Tubing ID & Lengths also Available



Shown with heater (not included)

MonoSLEEVE™

SINGLE Column Heater Controller

- Self-calibrating
- Plug & Play smart heater technology
- Temperature range from 25°C to 85°C
- Controller comes with Power Supply, USB Cable, GUI Software and Manual.

MonoSLEEVE is the next generation of the original HotSLEEVE controller. With it's advanced "Plug & Play" technology, MonoSleeve can accommodate single HotSleeve™+* or AgileSleeve+®* column heaters of different sizes without having to recalibrate to each individual sleeve. This allows you to switch out different heaters on the fly.

* HotSleeve+ is the new "smart" version of the original HotSleeve. AgileSleeve+ is the new "smart" version of AgileSleeve.

Cat. No.	Description
MonoSLEEVE	Single Column Heater Controller. Heater not included.



Shown with heaters (not included)

MultiSLEEVE™

MULTIPLE Column Heater Controller

- Self-calibrating
- Plug & Play smart heater technology
- Controls up to 4 column heaters simultaneously
- 4 independent channels
- Used in multiplexing applications
- Temperature range from 25°C to 85°C
- Controller comes with cables, manual and USB GUI software.

The MultiSLEEVE controller is used for applications which require multiple heating zones or multiple LC system heating. Used in conjunction with HotSleeve™+ and/or AgileSleeve+® heaters, it maintains four independent channels simultaneously and accurately while reducing overall equipment costs.

Cat. No.	Description
MultiSLEEVE	Multiple Column Heater Controller. Heaters not included.

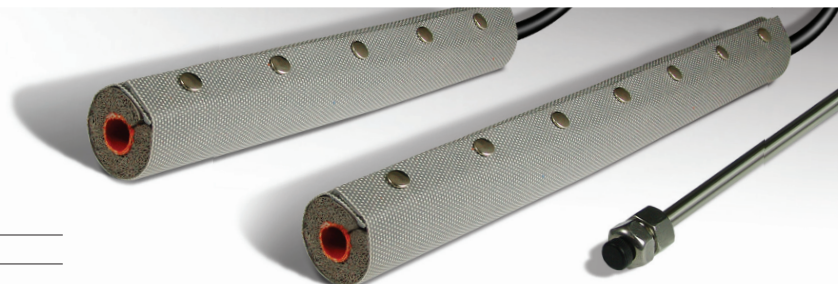
HotSleeve™+

Heating element only

Analytical Size Column Heater

- Self-calibrating
- Temperature range from 5°C above ambient to 85°C

Cat. No.	Description
HSI-5L	HotSleeve Plus Self-calibrating Heater for 5cm Columns
HSI-10L	HotSleeve Plus Self-calibrating Heater for 10cm Columns



Other items, options and/or sizes are available - please call for details.

Echelon C18: Sub 2µm & 3µm Columns



- Proprietary highest quality C18 & packing method
 - Better retention and resolution of compounds more polar than traditional C18 can manage
 - **Extreme Durability:**
 - pH 2-11
 - Handles 100% aqueous
 - **Proven Reliability:**
 - Adopted by high-throughput screening groups for years
- Featured in 2013 ASMS poster, visit:*
<http://www.analytical-sales.com/Echelon-Columns.html>

<2µm Echelon Columns

C18 100Å 1.7µm

Cat. No.	Description
ADV8106	Echelon C18, 100Å, 1.7µm, 2cm x 2.1mm
ADV8107	Echelon C18, 100Å, 1.7µm, 3cm x 2.1mm
ADV8108	Echelon C18, 100Å, 1.7µm, 5cm x 2.1mm

3µm Echelon Columns

C18 100Å 3µm

ADV8302	Echelon C18, 100Å, 3µm, 20mm x 2.1mm
ADV8303	Echelon C18, 100Å, 3µm, 30mm x 2.1mm
ADV8304	Echelon C18, 100Å, 3µm, 50mm x 2.1mm

Advantage™ Direct Connect Inline Filter Guard

- Protect your valuable columns from dirt and grease
- Direct connect to inlets for 1/16" tubing and 10-32 threads
- Changes in seconds without the need for tools
- Two frit sizes available: 0.5µm and 2.0µm
- Inexpensive and Disposable



Cat. No.	Description
1605	Advantage™ 0.5µm Direct Connect Inline Filter Guard
1620	Advantage™ 2.0µm Direct Connect Inline Filter Guard

Direct Connect SS UHPLC Pre-Column Filter

- Rated to 15,000psi • 0.5µm Titanium Frit • 1µl Dead Volume



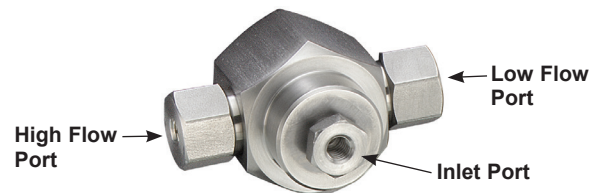
Cat. no.	Description	Qty
49005	Direct Connect UHPLC Pre-Column Filter	10

Model 63 Post-Column Binary Fixed Flow Splitters

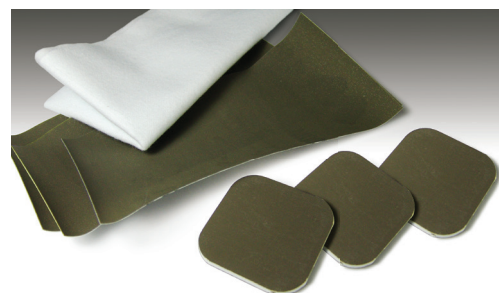
Analytical Range - 0.1-5mL/min Incoming Flow

- Fixed metering for precise control
- Fluid resistor technology
- Split ratios from 1:1 to 20,000:1
- Low dead volume
- Rugged stainless steel design

Model 63 Binary Fixed Splitter, with its interchangeable fluid resistors, eliminates the need to cut capillary tubing to change the split ratio. Split ratios can be changed by replacing the resistor set.



Cat. No.	Description
63-423	Binary Fixed Splitter, Ratio 1:1
63-422	Binary Fixed Splitter, Ratio 3:1
63-424	Binary Fixed Splitter, Ratio 4:1



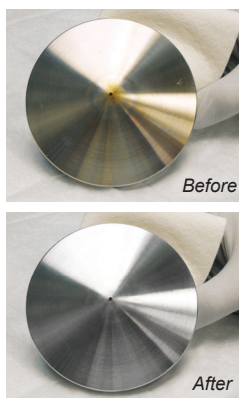
Mass Spec Polishing Kit

Clean the curtain plate and orifice of your Mass Spec source.

Kit Contains:

3 cleaning sheets, 3 cleaning pads, 1 Flannel Polishing Cloth

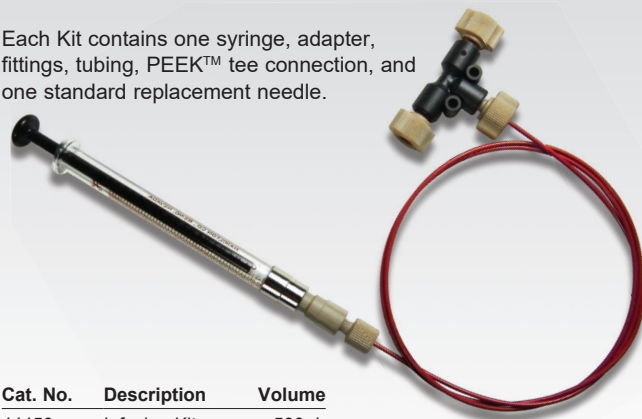
Cat. No.	Description
67001	Mass Spec Polishing Kit



For pricing, see
analytical-sales.com

Infusion Kits

Each Kit contains one syringe, adapter, fittings, tubing, PEEK™ tee connection, and one standard replacement needle.



Cat. No.	Description	Volume
44450	Infusion Kit	500µL
44410	Infusion Kit	1.0mL