



A Selection of Products for Your Workflow - From Sample to Detector

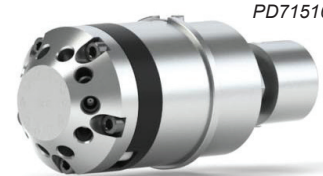
## Valve Parts

### Replacement Valve Pods for UHPLC Setups (Rheodyne)

Cat. No.	Description	Qty
3888	Rhebuild Kit for 2 Position, 6 Port Ultra High Pressure Stainless Steel Switching Valve (VXH593-888), Includes: 2 Rotor Seals, and Two Tools	Each
PD71510	2/10 TitanHT Replacement POD, VP, SPC3, RPC13	Each
47152-9994	RheBuild Kit	Each



PD7152



PD71510

### Replacement Stator and Rotor Seal (Vici)

Cat. No.	Description	Qty
25204	Replacement Stator for 4-port Valve (valve model C52-23441)	Each
23234	Replacement rotor seal for 4-port valve	Each



38200G



38400R

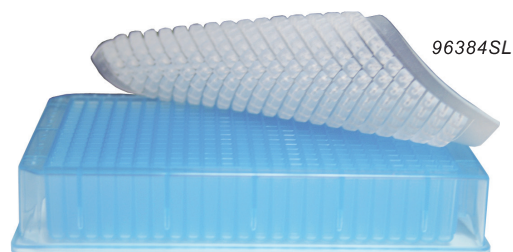
## 384-Well Collection Plates

### Square Well, 200µL

Cat. No.	Description	Qty
38200	200µL, Polypropylene, Square Well, <b>Clear</b>	24
38200B	200µL, Polypropylene, Square Well, <b>Blue</b>	24
38200G	200µL, Polypropylene, Square Well, <b>Green</b>	24
38200R	200µL, Polypropylene, Square Well, <b>Red</b>	24
38200Y	200µL, Polypropylene, Square Well, <b>Yellow</b>	24

### Square Well, 400µL

Cat. No.	Description	Qty
38400	400µL, Polypropylene, Square Well, <b>Clear</b>	24
38400B	400µL, Polypropylene, Square Well, <b>Blue</b>	24
38400G	400µL, Polypropylene, Square Well, <b>Green</b>	24
38400R	400µL, Polypropylene, Square Well, <b>Red</b>	24
38400Y	400µL, Polypropylene, Square Well, <b>Yellow</b>	24

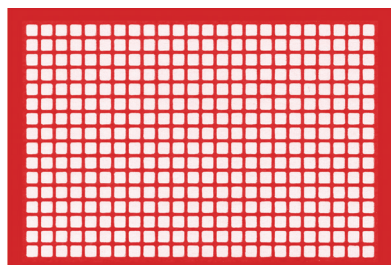


96384SL

### 384-Well Cap Mats Square Well

Cat. No.	Description	Qty
96384	Molded 384-Well Soft Silicone Square Well Cap Mat	5
96384SL	Molded 384-Well Pre-Slit Soft Silicone Square Well Cap Mat	5

38402SL



### 384-Well Pattern Teflon (PTFE) Adhesive Sealing Film

Cat. No.	Description	Qty
38402	Teflon (PTFE) Adhesive Film, <b>384</b> Square Well Pattern, Ultra-thin, <b>Purple</b>	100
38402SL	<b>Pre-slit</b> Teflon Adhesive Film, <b>384</b> Square Well Pattern, Ultra-thin, <b>Red</b>	100

# FlexChrom™

Flexible Stainless Steel Tubing

## Assemblies

UHPLC, Pre-Finished, One-Piece Flexible Stainless Steel Tubing with Finger Tight Stainless Steel Fittings



- 1/16" OD
- True ZDV
- Greater flexibility
- Pressure tested to 27,000 psi
- One-piece design – no brazed-on sleeves

FlexChrom™ can be ordered as single tubing or as an assembly using UHPLC stainless steel finger tight fittings (as shown).

### Single UHPLC Assembly

Cat. No.	Dimensions
990141-Flex	10cm x 0.004"ID
990142-Flex	20cm x 0.004"ID
990143-Flex	30cm x 0.004"ID
990111-Flex	10cm x 0.005"ID
990115-Flex	20cm x 0.005"ID
990128-Flex	30cm x 0.005"ID

### Double UHPLC Assembly

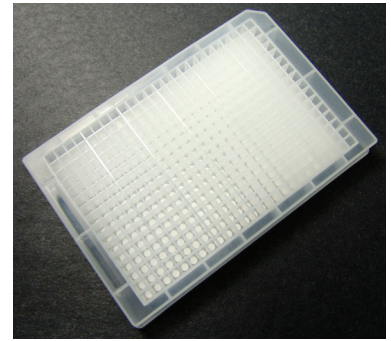
Cat. No.	Dimensions
990241-Flex	10cm x 0.004"ID
990242-Flex	20cm x 0.004"ID
990243-Flex	30cm x 0.004"ID
990211-Flex	10cm x 0.005"ID
990215-Flex	20cm x 0.005"ID
990228-Flex	30cm x 0.005"ID



### PEEK™ Ultra High Pressure Fingertight Fittings

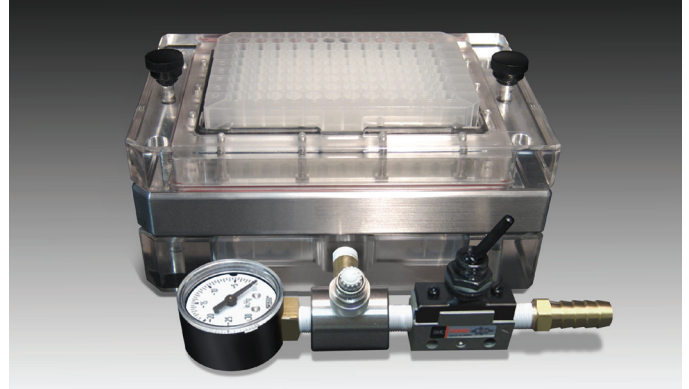
Cat. No.	Description	Pressure	Qty
66518-3	10-32 PEEK One-Piece Fitting for 1/16" OD Tubing	12,000 psi	10

All PEEK Tubing ID & Lengths also Available



### General Filtration 384-well Filter Plates

Cat. No.	Description	Qty
38412	384 Well Filter Plates, 140µL, Glass Fiber, 1.2µm	10
38407	384 Well Filter Plates, 140µL, Glass Fiber, 0.7µm	10



### Vacuum Manifold Filtration System for SPE Sample Preparation

- Adjustable vacuum control
- Easy access to filtrate
- Compatible with all standard filter bottom microplates
- Collect into any storage plate
- Compatible with robotic handling

Cat. No.	Description
96844	Vacuum Manifold Filtration System for SPE Sample Filtration