

TrueTaper
1mL COLLECTION PLATES

968810

50µL well
bottom volume

1mL Round Well Collection Plates

1mL TrueTaper™! 1mL, 96-Well Polypropylene Collection Plate

Cat. No.	Description	Volume	Qty
968810	1mL TrueTaper™ 96-Well Collection Plate	50µL bottom/1.0mL total	25
968810GC	1mL TrueTaper™ with SiliGuard	50µL bottom/ 1.0mL total	25

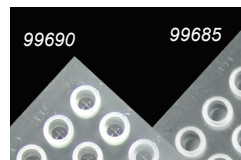
Use with
these Cap Mats:
(see details on back)



960181

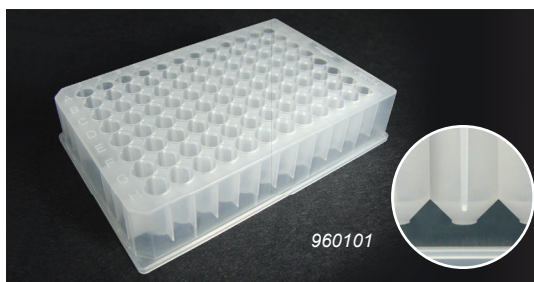


99890



99690

99685

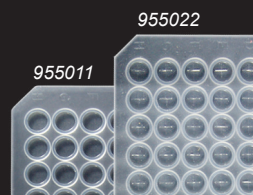


960101

Advantage™ 1mL Half-Height 96-Well Collection Plate

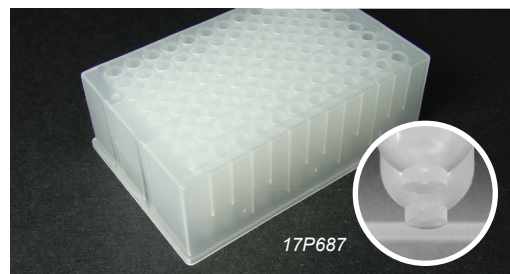
Use with these Cap Mats:
(see details on back)

Cat. No.	Description	Material	Color	Volume	Qty
960101	Round Well w/ Shallow V-Shaped Bottom	PP	CLEAR	1mL	32



955022

955011



17P687

Advantage™ Standard 1mL Collection Plates with Round Well & Round Bottom

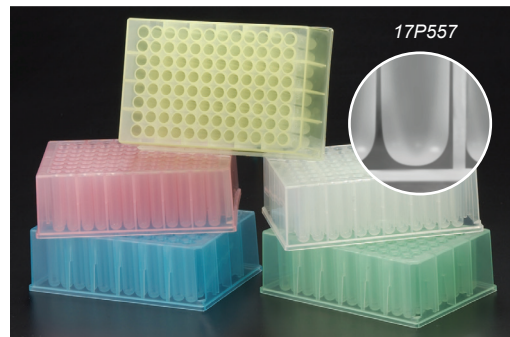
Cat. No.	Description	Material	Color	Volume	Qty
17P687	Round Well/Round Bottom	PP	CLEAR	1mL	20
17P687GC	Round Well/Bottom w/ SiliGuard	PP	CLEAR	1mL	20
96106S	Sterile Round Well/Bottom	PP	CLEAR	1mL	10

Sterilized plates are available upon request

Use with these
Cap Mats:
(see details on back)



96057



17P557

Advantage™ Clear-Vu™ 1mL Collection Plates with Round Well & Rounded Bottom

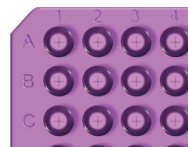
• See-through polypropylene

Cat. No.	Description	Material	Color	Volume	Qty
17P557	Round Well/Round Bottom	Clear-Vu PP	CLEAR	1mL	24
17P557GC	Round Well/Bottom w SiliGuard	Clear-Vu PP	CLEAR	1mL	24

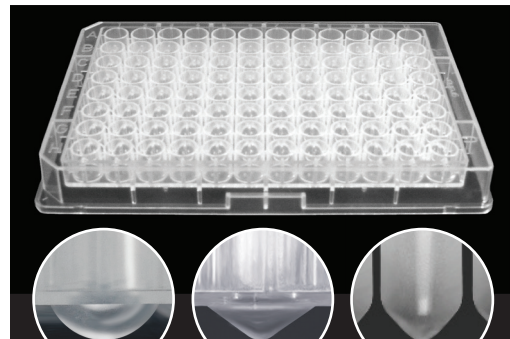
For pricing, see analytical-sales.com



963670



965075



96355

96340

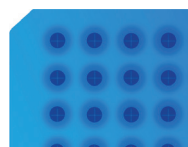
96065

Small Volume Collection Plates with Round Well

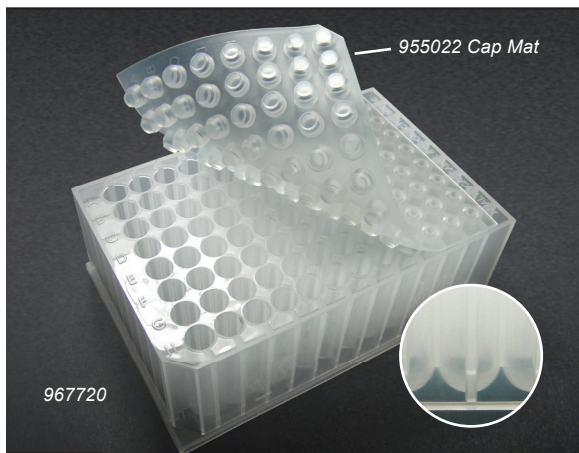
Cat. No.	Description	Material	Color	Volume	Qty
96355	U-Shaped Bottom	PP	CLEAR	355µL	100
96340	V-Shaped Bottom	PP	CLEAR	340µL	100
96390	Flat Bottom	PP	CLEAR	390µL	100
96065	V-Shaped Deep	PP	CLEAR	650µL	50
96355GC	U-Shaped Bottom with SiliGuard	PP	CLEAR	355µL	25
96340GC	V-Shaped Bottom with SiliGuard	PP	CLEAR	340µL	25
96390GC	Flat Bottom with SiliGuard	PP	CLEAR	390µL	25
96065GC	V-Shaped Deep with SiliGuard	PP	CLEAR	650µL	50



96FSSO



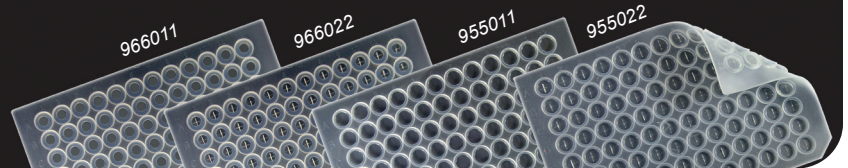
967701



2mL Round Well/Round Bottom Polypropylene Collection Plate

Cat. No.	Description	Volume	Qty
967720	2mL Round Well/Round Bottom 96-Well Collection Plate	2mL	25
967720GC	2mL Round Well/Round Bottom w/ SiliGuard	2mL	25

Use with these Cap Mats (see back for details)



2mL Square Well Collection Plates



TrueTaper™

2mL, 96-Well Polypropylene Collection Plate - Square Well

- Unique tapered bottom well design for maximum sample recovery
- 2.0mL total volume capacity
- 100µL tapered bottom volume



Cat. No.	Description	Volume	Qty
968820	TrueTaper™ 96-Well Collection Plate	100µL bottom/2.0mL total	25
968820GC	TrueTaper™ w/ SiliGuard	100µL bottom/ 2.0mL total	25

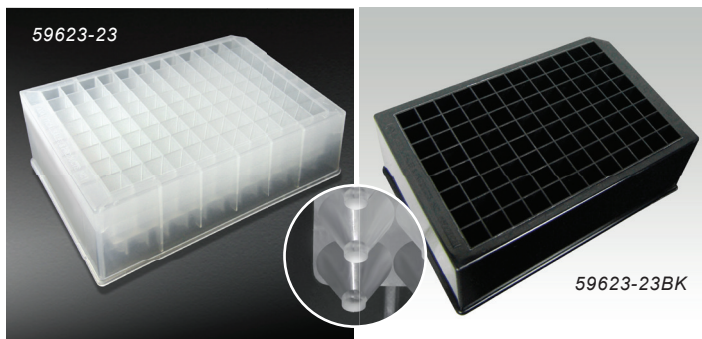
Can be used with all Cap Mats and Film listed at right →

Black TrueTaper for Light Sensitive Compounds

Cat. No.	Description	Material	Volume	Qty
968820BL	TrueTaper 96-Well Collection Plate, Black	PP	100µL bottom/2.0mL total	25



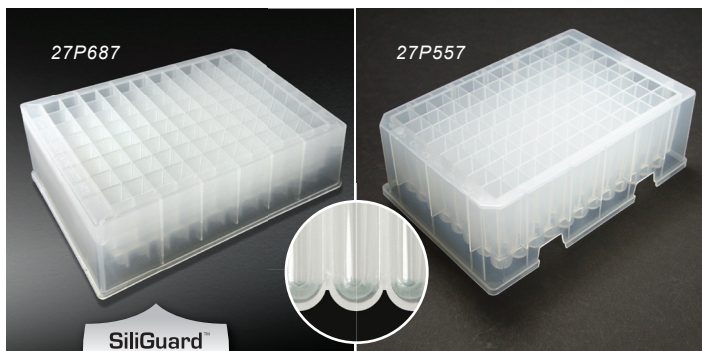
968820BL



Advantage™ 2mL 96-Well Polypropylene Collection Plates Square Well with V-Shaped Bottom

Cat. No.	Description	Volume	Qty
59623-23	Square Top, V-Bottom Collection Plate	2mL	10
59623-23GC	Square Top, V-Bottom w/ SiliGuard	2mL	10
59623-23BK	BLACK Square Top, V-Bottom	2mL	10

Can be used with all Cap Mats and Film listed at right →



Advantage™ 2mL 96-Well Polypropylene Collection Plates Square Well with Round Bottom

Cat. No.	Description	Volume	Qty
27P687	Square Top, Round Bottom Collection Plate	2mL	20
27P687GC	Square Top, Round Bottom w/ SiliGuard	2mL	20

Advantage™ Clear-Vu™ 2mL 96-Well Collection Plates Square Well with Round Bottom

- See-through polypropylene

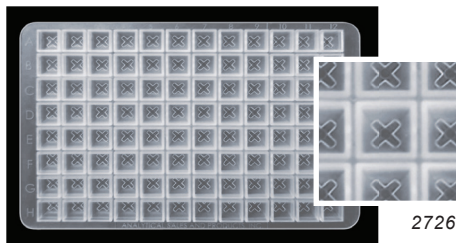
Cat. No.	Description	Volume	Qty
27P557	Square Top, Round Bottom Collection Plate	2mL	24
27P557GC	Square Top, Round Bottom w/ SiliGuard	2mL	24

Sterilized plates are available upon request



All Our Polypropylene Collection Plates are Available with SiliGuard™ Low Bind Coating

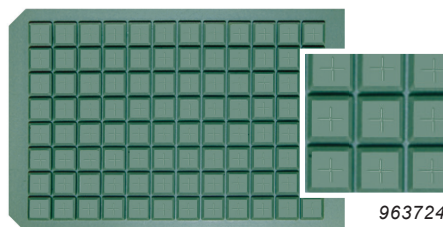
Square Well Cap Mats



Standard Square Cap Mats

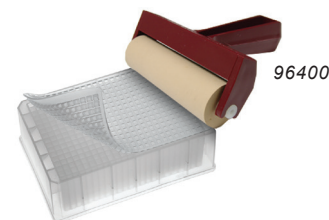
- Thin polypropylene – less than 1/16" at the "X"
- Prevents cross contamination between wells
- Economical

Cat. No.	Description	Color	Qty
2726	2mL Autosampler Compatible Square Cap Mat, Pierceable 'X' on Surface	CLEAR	20
3726	2mL Square Cap Mat, Low Temp. (-80°), For Long Term Storage	CLEAR	24

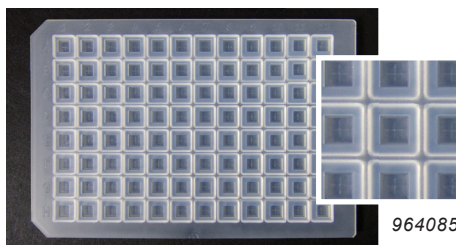


Resealable Cap Mats

- Compatible with all current autosampler needles
- No coring or cross talk
- Fits all standard 96-position blocks
- Reseals after multiple injections
- Pre-slit or non-pre-slit

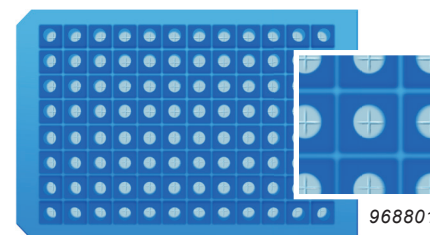


Cat. No.	Description	Color	Qty
963725	Square Well, Silicone/PTFE	Green	5
963724	Pre-Slit , Square Well, Silicone/PTFE	Green	5
964008	Ultra Thin Square Well, Soft Silicone/PTFE	CLEAR	5
964085	Pre-Slit , Ultra Thin Square Well, Soft Silicone/PTFE	CLEAR	5
965008	Ultra Thin Square Well, Soft Silicone/PTFE	Purple	5
965085	Pre-Slit , Ultra Thin Square Well, Soft Silicone/PTFE	Purple	5
96400	4" Rubber Roller		1

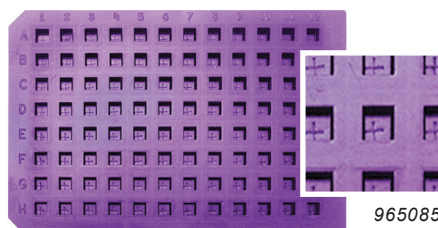


Thicker Resealable Silicone, PTFE Coated Cap Mats

- Recommended for Shimadzu autosamplers
- Better suited for 2° to 8°C autosampler temperatures



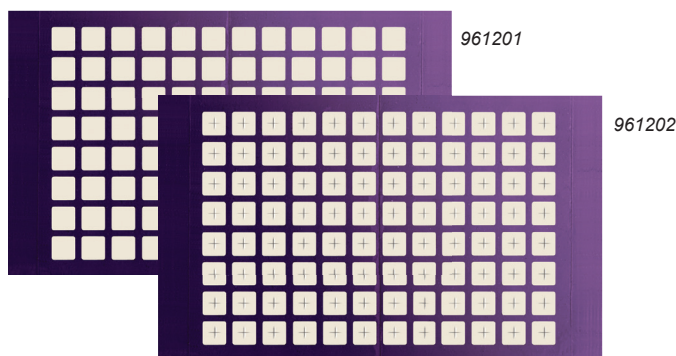
Cat. No.	Description	Color	Qty
968802	Square Well, Soft Silicone/PTFE	Blue	5
968801	Pre-Slit , Square Well, Soft Silicone/PTFE	Blue	5



Sealing Film + (Patented)

Pattern Adhesive PTFE (Teflon®) Sealing Film

- Adhesive-free target areas
- Firm seal to microplate -80°C to +120°C
- Prevents cross-contamination and evaporation
- Outstanding performance for PCR applications
 - 40 cycles, hot lid at 100°C
- Outstanding performance with Autosamplers
 - Only 0.5 lb force needed to pierce
 - No coring of material or clogging of needle
- Optically clear for inspection and diagnosis



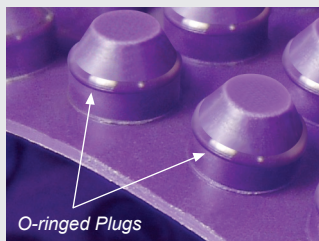
Cat. No.	Description	Qty
961201	Advantage™ Teflon (PTFE) Adhesive Film, Square 96-Well Pattern, Ultra-thin	100
961202	Advantage™ Pre-scored Teflon (PTFE) Adhesive Film, Square 96-Well Pattern, Ultra-thin	100

For pricing, see analytical-sales.com

Round Well Cap Mats

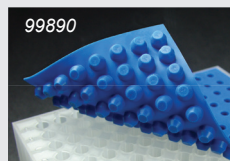
Purple Silicone Cap Mats for 1mL TrueTaper Collection Plates

- Unique O-ringed Plugs
- Holds Seal with Vigorous Vortexing
- No Crosstalk
- Autosampler Compatible

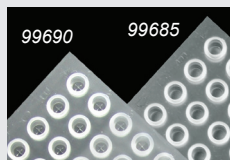


O-ringed Plugs

Cat. No.	Description	Qty
960181	Purple Silicone/PTFE Cap Mat for 1mL TrueTaper Collection Plate	5
960185	Purple Pre-Slit Silicone/PTFE Cap Mat for 1mL TrueTaper Plate	5



99890

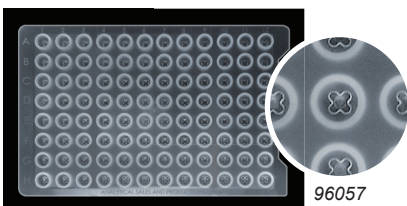


99690

99685

Silicone Cap Mats for 1mL TrueTaper Collection Plates

Cat. No.	Description	Qty
99890	Blue Opaque Pre-Slit Silicone/PTFE CapMat for 1mL TrueTaper Plate and 1mL Tapered Vials	5
99685	CLEAR Silicone/PTFE Cap Mat for 1mL TrueTaper Plate and 1mL Tapered Vials	5
99690	CLEAR Pre-Slit Silicone/PTFE Cap Mat for 1mL TrueTaper Plate and 1mL Tapered Vials	5

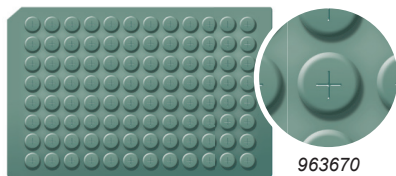


96057

Standard Round Well Cap Mats

- Thin polypropylene, less than 1/16" thick at "X"
- Prevents cross contamination between wells

Cat. No.	Description	Color	Qty
96057	1mL Autosampler Compatible PP Cap Mat, Pierceable X on Surface	CLEAR	20
96017	1mL PE Cap Mat, for Storage Only - up to 120°C	CLEAR	20
96017-S	Sterile 1mL Autosampler Compatible PP Cap Mat for Collection Plates 96106S	CLEAR	10



963670

Resealable Silicone/PTFE Coated Cap Mats

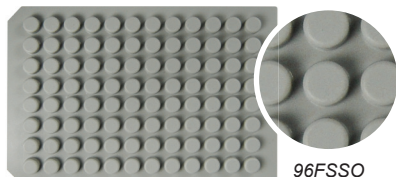
- Compatible with all current autosampler needles
- No coring or cross talk
- Fits all standard 96-position blocks
- Reseals after multiple injections
- Pre-slit or non-pre-slit

Cat. No.	Description	Color	Qty
963675	Round Well, Silicone/PTFE (good for long-term storage at -80°C)	Green	5
963670	Pre-Slit Round Well, Silicone/PTFE (good long-term storage at -80°C)	Green	5
964007	Ultra Thin Round Well, Soft Silicone/PTFE	CLEAR	5
964075	Pre-Slit, Ultra Thin Round Well, Soft Silicone/PTFE	CLEAR	5
965007	Ultra Thin Round Well, Soft Silicone/PTFE	Purple	5
965075	Pre-Slit, Ultra Thin Round Well, Soft Silicone/PTFE	Purple	5
96FSS0	Round Well, Soft Silicone/PTFE, good with aggressive solvents and shaking	Gray	5
96FPSO	Pre-Slit Round Well, Soft Silicone/PTFE, good with aggressive solvents	Gray	5



965075

Best Seller!

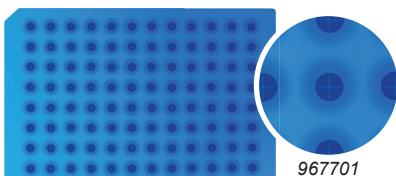


96FSS0

Thicker Resealable Silicone, PTFE Coated Cap Mats

- Recommended for Shimadzu autosamplers
- Better suited for 2° to 8°C autosampler temperatures

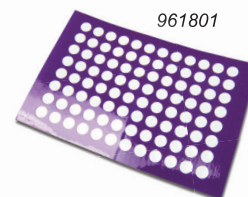
Cat. No.	Description	Color	Qty
967702	Round Well, Soft Silicone/PTFE	Blue	5
967701	Pre-Slit, Round Well, Soft Silicone/PTFE	Blue	5



967701

Pattern Adhesive PTFE (Teflon®) Sealing Film (patented)

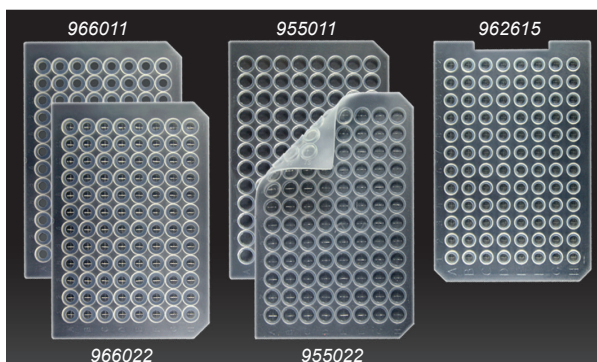
Cat. No.	Description	Qty	Price
961801	PTFE Adhesive Film, Round 96-Well Pattern, Ultra-thin	100	\$211
961802	Pre-scored PTFE Adhesive Film, Round 96-Well Pattern, Ultra-thin	100	\$239



961801

Pattern Adhesive Resealable Silicone Sealing Film (patented)

Cat. No.	Description	Qty	Price
96104	Round 96-Well Adhesive Silicone Sealing Film	5	\$40



966011

955011

962615

966022

955022

Advantage™ Round Well Silicone/PTFE Cap Mats

Used on Axygen and Nunc™ Collection Plates

Cat. No.	Description	Qty
955011	96-Well Silicone/PTFE Cap Mat - Shallow Plug, Wider Surface Area	5
955022	Pre-Slit 96-Well Silicone/PTFE Cap Mat - Shallow Plug, Wider Surface Area	5
966011	96-well Silicone/PTFE Cap Mat - Deeper Plug, Thicker	5
966022	Pre-Slit 96-Well Silicone/PTFE Cap Mat - Deeper Plug, Thicker	5

Used on Waters® 1mL and Costar® Collection Plates

962611	96-well Clear Silicone/PTFE Cap Mat for Low Profile Collection Plates	5
962615	Pre-Slit 96-well Clear Silicone/PTFE Cap Mat for Low Profile Collection Plates	5