



# Para-dox® Gen II Reaction Blocks

## **NEW!** 4 and 5 Bolt Photoredox Reaction Blocks

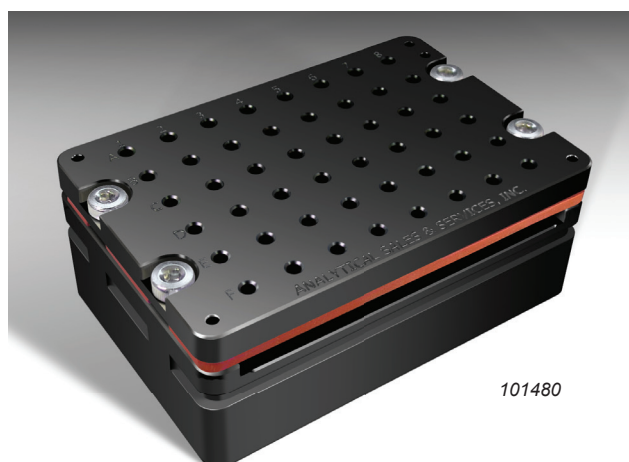
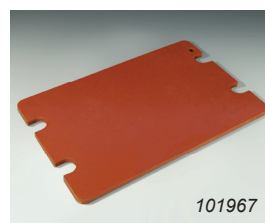
Para-dox SLAS footprint aluminum reaction blocks are now available in a 4 or 5-bolt configuration. Some benefits of these new blocks include:

- Less bolts = less time to assemble
- Less light bleed (48 and 96 position blocks)
- Less Maintenance
- Vials fit tighter (less shifting)
- Port for thermocouple, sensors, etc.
- Corner holes on both the lid and the bottom for accessory attachment
- Longer lasting screws (larger diameter, larger threads)
- Larger holes in lid to accommodate a variety of needle sizes
- Only one 1/8" rubber mat compared to two 1/16" mats on previous versions (makes for easier assembly)



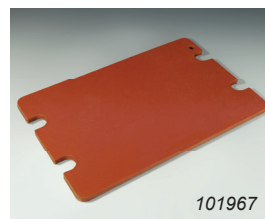
### 4-Bolt, 96-Well Aluminum Reaction Block for 1mL, 8x30mm Glass Inserts

Catalog No.	Description	Qty
101960	4-Bolt, 96-Well Aluminum Reaction Block for 8x30mm (1mL) Glass Inserts. Includes: Base Plate, Cover, Screws, PFA Film and Rubber Mats	Each
101968	Top PFA Films for Gen II 96-Well (101960) and 48-Well (101480) Reactors	25
101967	Top Rubber Mats for Gen II 96-Well (101960) and 48-Well (101480) Reactors	25
101965	Bottom Rubber Mats for Gen II 96-Well Reactor (101960)	25
SHS0034	Socket Head Screws for Gen II 96-Well and 48-Well Reactors	5



### 4-Bolt, 48-Well Aluminum Reaction Block for 2mL, 12x32mm Vials

Catalog No.	Description	Qty
101480	4-Bolt, 48-Well Aluminum Reaction Block for 12x32mm (2mL) Vials. Includes: Each Base Plate, Cover, Screws, PFA Film and Rubber Mat	Each
101968	Top PFA Films for Gen II 96-Well (101960) and 48-Well (101480) Reactors	25
101967	Top Rubber Mats for Gen II 96-Well (101960) and 48-Well (101480) Reactors	25
SHS0034	Socket Head Screws for Gen II 96-Well and 48-Well Reactors	5

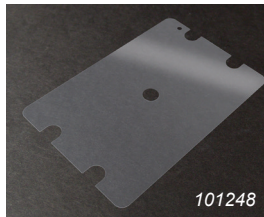




101240

## 5-Bolt, 24-Well Aluminum Reaction Block for 4mL (1 Dram), 15x45mm Vials

Catalog No.	Description	Qty
101240	5-Bolt, 24-Well Aluminum Reaction Block for 15x45mm (4mL) Vials. Includes: Base Plate, Cover, Screws, PFA Film and Rubber Mat	Each
101248	Top PFA Films for Gen II 24-Well Reactor (101240)	25
101247	Top Rubber Mats for Gen II 24-Well Reactor (101240)	25
SHS0114	Socket Head Screws for Gen II 24-Well Reactors and 96-Well Lightweight Reactors	5



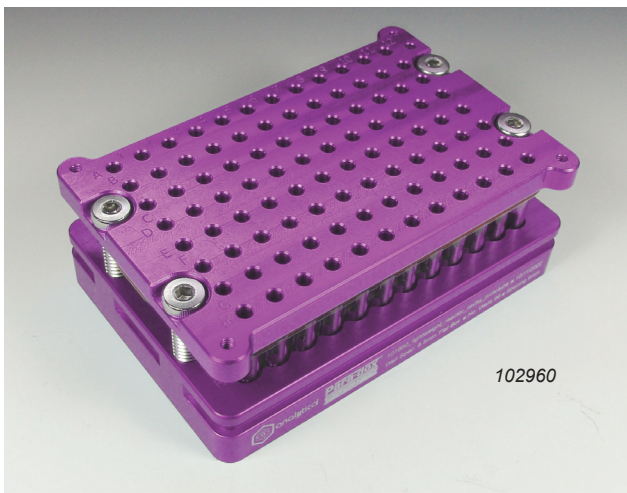
101248



101247



SHS0114



102960

## 4-Bolt, 96-Well LIGHTWEIGHT Aluminum Reaction Block for 1mL, 8x30mm Glass Inserts

- 37% lighter than Gen II, 96-well standard 4-bolt reactor
- Great for use on a low-capacity balance with a 500g max limit
- Reduced weight allows for better centrifuge performance
- 9mm Well Spacing

Catalog No.	Description	QTY
102960	4-Bolt, 96-Well LIGHTWEIGHT Aluminum Reaction Block for 1mL, 8x30mm Glass Inserts. Includes Vial Rack, Top Cover, PFA Sheet, Rubber Mats and Screws	Each
102968	Top PFA Films for Gen II LIGHTWEIGHT 96-Well Reactor (102960)	25
102967	Top Rubber Mats for Gen II LIGHTWEIGHT 96-Well Reactor (102960)	25
102965	Bottom Rubber Mat for Gen II LIGHTWEIGHT 96-Well Reactor (102960) - (two required per block)	Each
SHS0114	Socket Head Screws for Gen II 24-Well Reactors and 96-Well Lightweight Reactors	5

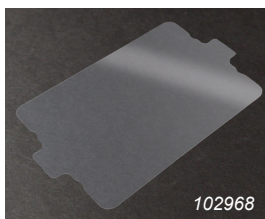
### 96-Well Reactor Assembly Weight\*

Gen II, Lightweight (102960): 477.8g  
- Base only, no lid or screws: 267.8g

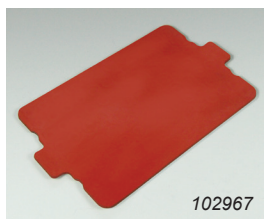
Gen II, 4-Bolt (101960): 769.0g

Gen I, Original (96973): 536.0g

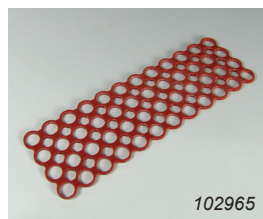
\* Weight without vials. Adding vials will add ~ 131g.



102968



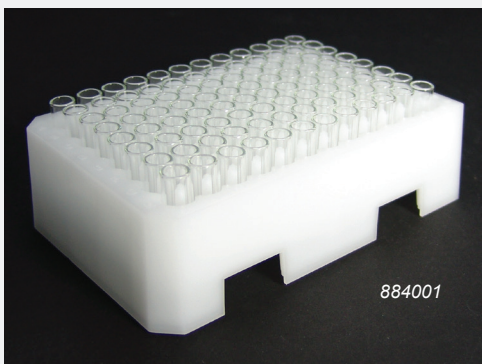
102967



102965



SHS0114



884001

## Assembled 96-Well Vial Tray

Cat. No.	Description
884001	Stackable Tray Loaded with 96 8x30 Shell Vials (884001-CASE), Includes Tray and Vials